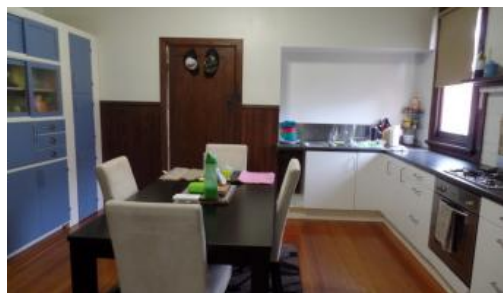


Sold



155 Swallow St, Shepparton



Investors or developers!

Situated on a 1240m2 block sits this 3 bedroom home. Ripe for development!

The above information provided has been furnished to us by the vendor/s. We have not verified whether or not that information is accurate and do not have any belief in one way or the other in its accuracy. We do not accept any responsibility to any person for its accuracy and do no more than pass it on. All interested parties should make and rely upon their own inquiries in order to determine whether or not this information is in fact accurate.

3 2 1,240 m2

Price SOLD for \$350,000

Property Type Residential

Property ID 1045

Land Area 1,240 m2

Agent Details

Office Details

Shepparton
187 Corio Street Shepparton VIC
3630 Australia
03 5831 6633

