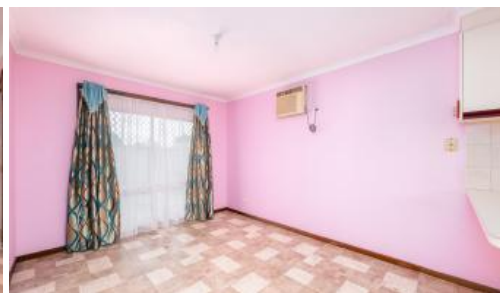


Leased



Unit 2/12 Bowe St, Shepparton



Large & Secure 2 Bedroom Unit

This large & secure 2 bedroom unit is located very close to the CBD, walking tracks & schools & is the back unit of only two. Both bedrooms feature built-in robes. Very large lounge room, open plan kitchen & dining area with a gas cooktop. The home has a gas heater & air conditioning. Spacious bathroom with a shower, bath, separate toilet and laundry with additional cupboard space. Additional features include NBN, a large and secure backyard and a single lock up garage. 12 month lease. Pets on application.

The above information provided has been furnished to us by the vendor/s. We have not verified whether or not that information is accurate and do not have any belief in one way or the other in its accuracy. We do not accept any responsibility to any person for its accuracy and do no more than pass it on. All interested parties should make and rely upon their own inquiries in order to determine whether or not this information is in fact accurate.

🛏 2 🚿 1 🚗 1

Price	\$370 per week
Property Type	Rental
Property ID	1273

Agent Details

Jackie Shipton - 0448 354 748

Office Details

Shepparton
187 Corio Street Shepparton VIC
3630 Australia
03 5831 6633

