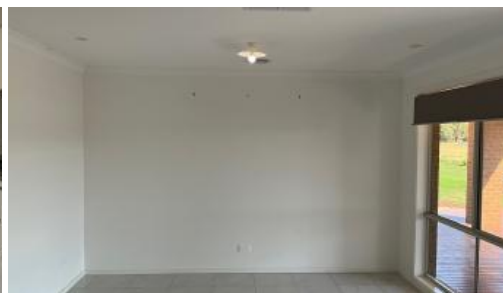


Leased



11 Toby Crescent, Tatura



Large family home in prestigious location

Large 4 bedroom family home on large block with plenty of room for the kids to run around. Open plan kitchen and living area with dishwasher, walk in pantry and 5 gas burner cooktop, separate second living area and study or third living area.

Main bedroom has an ensuite and walk in robe, remaining 3 bedrooms with built in robes. Evaporative cooling and ducted heating throughout. Undercover decked alfresco with rural outlook.

The above information provided has been furnished to us by the vendor/s. We have not verified whether or not that information is accurate and do not have any belief in one way or the other in its accuracy. We do not accept any responsibility to any person for its accuracy and do no more than pass it on. All interested parties should make and rely upon their own inquiries in order to determine whether or not this information is in fact accurate.

 4  2  2  0.50 ac

Price	\$650
Property Type	Rental
Property ID	1481
Land Area	0.50 ac

Agent Details

Jackie Shipton - 0448 354 748

Office Details

Shepparton
187 Corio Street Shepparton VIC
3630 Australia
03 5831 6633

