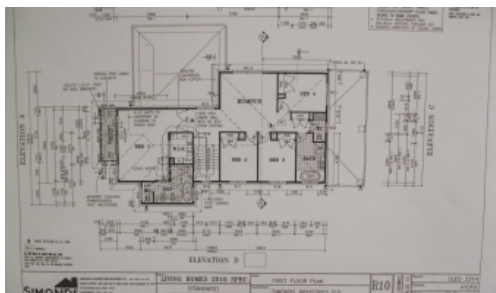
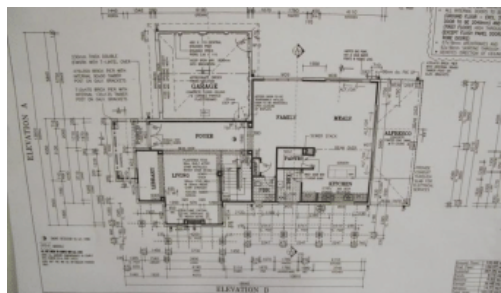


Sold

54 Canterbury Avenue, Shepparton



Seriously Stylish

As the name suggests, the Cleo Simonds display home is a seriously stylish home. Generous ground floor dimensions offer spacious living areas, while upstairs the accommodation is similarly impressive. This home is the complete package including all the upgrades. The many features include four generous bedrooms, two living areas and a rumpus room. The outdoor alfresco area takes your breath away and will be the envy of your friends. Evaporative cooling and gas log fire heating keeps the home at the perfect temperature all year round. This seriously stylish home is fully landscaped and ready to move into. Why build when you can have the complete package with all the bells and whistles and the hard works been done. Not only an impressive family home but also an investment opportunity. RUN-Don't Walk

The above information provided has been furnished to us by the vendor/s. We have not verified whether or not that information is accurate and do not have any belief in one way or the other in its accuracy. We do not accept any responsibility to any person for its accuracy and do no more than pass it on. All interested parties should make and rely upon their own inquiries in order to determine whether or not this information is in fact accurate.

4 2 2

Price SOLD for \$550,000
Property Type Residential
Property ID 165

Agent Details

Office Details

Shepparton
187 Corio Street Shepparton VIC
3630 Australia
03 5831 6633

