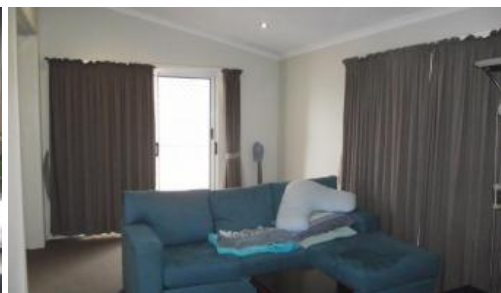


Sold



Lot 62 Goulburn Valley High Way, Kialla



## Life Style Village

Looking to downsize, relax and put your feet up? Then look no further, this four year old unit is in as new condition with gas cooking, split system heating, cooling, two bedrooms with BIR'S, front veranda, carport and shed. Be quick.

The above information provided has been furnished to us by the vendor/s. We have not verified whether or not that information is accurate and do not have any belief in one way or the other in its accuracy. We do not accept any responsibility to any person for its accuracy and do no more than pass it on. All interested parties should make and rely upon their own inquiries in order to determine whether or not this information is in fact accurate.

2 1 2

**Price** SOLD for \$110,000  
**Property Type** Residential  
**Property ID** 183

### Agent Details

Helen Tracy - 0413 454 082

### Office Details

Shepparton  
187 Corio Street Shepparton VIC  
3630 Australia  
03 5831 6633

