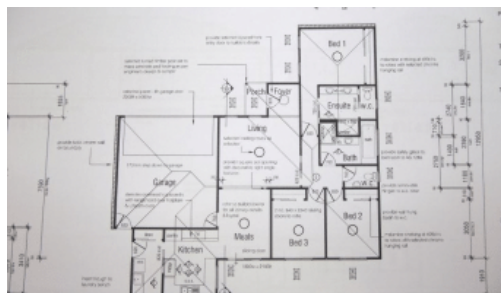


Sold



20A Annerley Avenue, Shepparton



## Brand New Townhouse Drastically Reduced!

Nothing has been spared on quality in this custom designed master built home. Consisting of three bedrooms with built in robes, full ensuite to master bedroom including double vanity and separate toilet. The main bathroom enjoys a large shower separate bath and guest powder room. The kitchen has quality appliances including gas cooktop , electric oven and stainless steel dishwasher. Plenty of living area with ducted heating and evaporative cooling throughout. Solar hot water and a 2000 litre rainwater tank, double lock up garage with remote door and lovely landscape gardens complete this excellent package. All there is left to do is move in and relax. Inspection sure to please!

The above information provided has been furnished to us by the vendor/s. We have not verified whether or not that information is accurate and do not have any belief in one way or the other in its accuracy. We do not accept any responsibility to any person for its accuracy and do no more than pass it on. All interested parties should make and rely upon their own inquiries in order to determine whether or not this information is in fact accurate.

3 3 2

Price

SOLD

Property Type

Residential

Property ID

209

### Agent Details

### Office Details

Shepparton

187 Corio Street Shepparton VIC

3630 Australia

03 5831 6633

