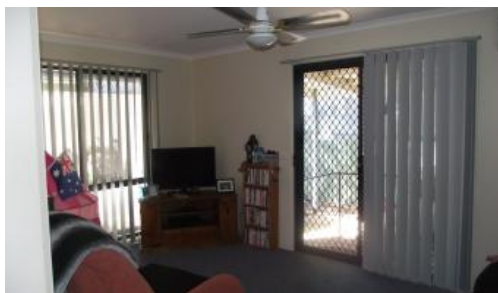


Sold



113 Protea Place, Kialla



Over 50's Living Parklands Village

Looking for a relaxed lifestyle? Then look no further this two bedroom villa consists of two bedrooms with BIR'S separate lounge area, kitchen with electric stove which overlooks the private undercover decked area. Backyard with garden shed, carport and entertaining area. Surrounded by established garden. Save on electricity cost with solar panels fitted. Inspection sure to please!

The above information provided has been furnished to us by the vendor/s. We have not verified whether or not that information is accurate and do not have any belief in one way or the other in its accuracy. We do not accept any responsibility to any person for its accuracy and do no more than pass it on. All interested parties should make and rely upon their own inquiries in order to determine whether or not this information is in fact accurate.

2 1 2

Price SOLD for \$130,000
Property Type Residential
Property ID 359

Agent Details

Office Details

Shepparton
187 Corio Street Shepparton VIC
3630 Australia
03 5831 6633

