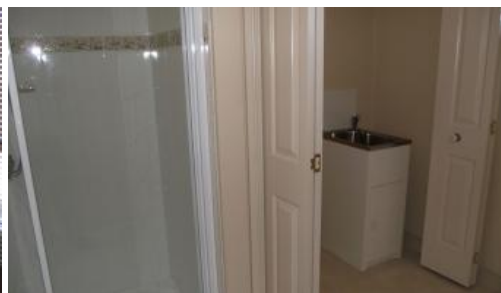


Sold



Lot 64 Goulburn Valley Highway, Kialla



Parklands Shepparton Easy Living Village Awaits You!

If you are over 55 and looking to downsize or simply preparing for retirement then Parklands Easy Living Village is for you! Lot 64 is only 18 months old and the current owners are selling due to ill health. With spacious and luxury open living, fully appointed kitchen and bathroom, split system heating cooling, carport and low maintenance garden with garden shed. No stamp duty, no council rates and no exit fees. Pet friendly, affordable and safe and secure. Inspect today.

The above information provided has been furnished to us by the vendor/s. We have not verified whether or not that information is accurate and do not have any belief in one way or the other in its accuracy. We do not accept any responsibility to any person for its accuracy and do no more than pass it on. All interested parties should make and rely upon their own inquiries in order to determine whether or not this information is in fact accurate.

🚗 2 🏠 1 🚗 1

Price	SOLD
Property Type	Residential
Property ID	367

Agent Details

Office Details

Shepparton
187 Corio Street Shepparton VIC
3630 Australia
03 5831 6633

