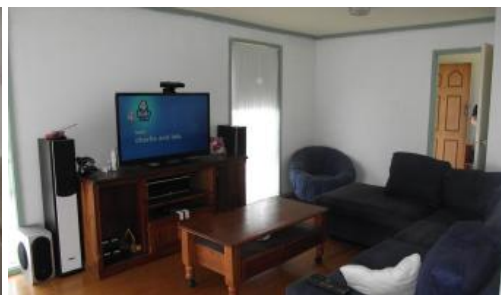


Sold



25 Northumberland Crescent, Shepparton



## Investor Opportunity/ First Home Buyer

Situated in south Shepparton sits this neat and tidy BV on a corner allotment of 500m2 approx. Consisting of 3 good sized bedrooms, central bathroom and reasonable living areas with gas heating and air conditioning. Secure backyard with carport and sleep out on shed. Currently rented for \$12,480 pa at 7.5% return. Be quick!

The above information provided has been furnished to us by the vendor/s. We have not verified whether or not that information is accurate and do not have any belief in one way or the other in its accuracy. We do not accept any responsibility to any person for its accuracy and do no more than pass it on. All interested parties should make and rely upon their own inquiries in order to determine whether or not this information is in fact accurate.

3 1 1

**Price** SOLD for \$166,000  
**Property Type** Residential  
**Property ID** 620

### Agent Details

Helen Tracy - 0413 454 082

### Office Details

Shepparton  
187 Corio Street Shepparton VIC  
3630 Australia  
03 5831 6633

