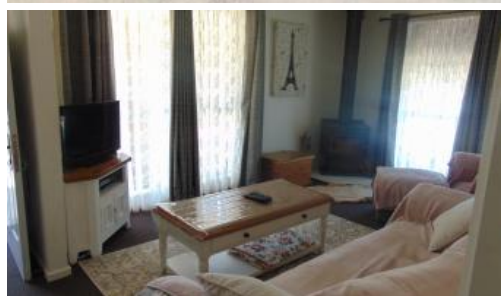


Sold



28 Paisley Crescent, Mooroopna



Will sell fast!!

This freshly painted brick veneer home is situated in a quiet court close to schools and shops.

Features include:

- Large 9x6m shed with power, mezzanine floor and a bonus room inside
- 5kw solar panels
- 3 bedrooms, 2 with BIR's
- Large L shaped lounge room
- 2 car carport
- Beautiful enclosed backyard
- Ducted heating and cooling throughout
- Canara heater
- Outdoor area with outdoor fernery

This immaculate home is likely to sell fast. Great for starting a family or as an investment property.

Don't miss out.

The above information provided has been furnished to us by the vendor/s. We have not verified whether or not that information is accurate and do not have any belief in one way or the other in its accuracy. We do not accept any responsibility to any person for its accuracy and do no more than pass it on. All interested parties should make and rely upon their own inquiries in order to determine whether or not this information is in fact accurate.

3 1 2

Price SOLD for \$235,000

Property Type Residential

Property ID 775

Agent Details

Rod Seach - 0488 445 919

Office Details

Shepparton
187 Corio Street Shepparton VIC
3630 Australia
03 5831 6633



