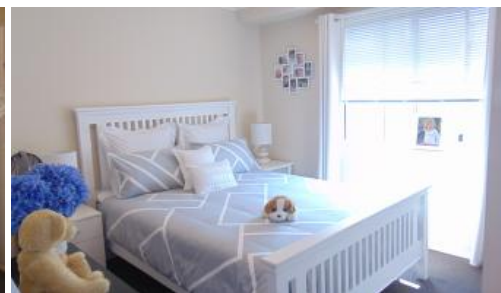


Sold



58 Wattle Court, Parklands Lifestyle Village, Kialla



## Just beautiful

If you're looking for a home that has all the comforts of modern living in a relaxed environment then look no further than this beauty. Situated in Parklands easy living village which offers a secure and enjoyable lifestyle.

The many features of this home include two generous bedrooms with a WIR and two way bathroom attached to the master bedroom. The modern and stylish kitchen is large enough to cook up a storm and has plenty of cupboard space which includes a dishwasher, electric oven and gas hotplates. Open plan living and dining area with the sun streaming through is so fresh and inviting.

Externally the double carport and outdoor entertaining area allow plenty of space to enjoy the great outdoors. Shedding and neat gardens with watering system make this dwelling easy care.

Spoil yourself and enjoy this just beautiful home.

(Please note, not on a title and a weekly fee applies)

The above information provided has been furnished to us by the vendor/s. We have not verified whether or not that information is accurate and do not have any belief in one way or the other in its accuracy. We do not accept any responsibility to any person for its accuracy and do no more than pass it on. All interested parties should make and rely upon their own inquiries in order to determine whether or not this information is in fact accurate.

🏠 2 🚗 1 🚗 2

**Price** SOLD for \$165,000  
**Property Type** Residential  
**Property ID** 818

## Agent Details

Helen Tracy - 0413 454 082

## Office Details

Shepparton  
187 Corio Street Shepparton VIC  
3630 Australia  
03 5831 6633

