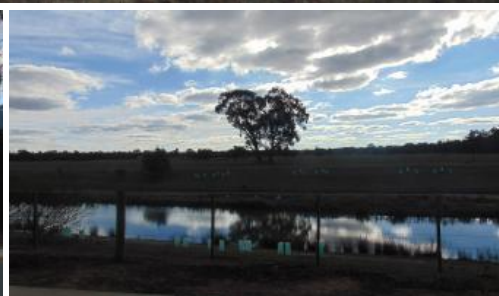


Sold



20 Forest Drive, Kialla



Build a home with a view...

Are you looking to build in the future? We have have an amazing block available for sale which comes with a beautiful view. Located in Kialla, this block is walking distance to Riverside Plaza and close to schools and parks. Nestled in a quiet location overlooking a paddock with a lake, this 804m2 block is everyone's dream.

The above information provided has been furnished to us by the vendor/s. We have not verified whether or not that information is accurate and do not have any belief in one way or the other in its accuracy. We do not accept any responsibility to any person for its accuracy and do no more than pass it on. All interested parties should make and rely upon their own inquiries in order to determine whether or not this information is in fact accurate.

804 m2

Price	SOLD for \$120,500
Property Type	Residential
Property ID	842
Land Area	804 m2

Agent Details

Helen Tracy - 0413 454 082

Office Details

Shepparton
187 Corio Street Shepparton VIC
3630 Australia
03 5831 6633

