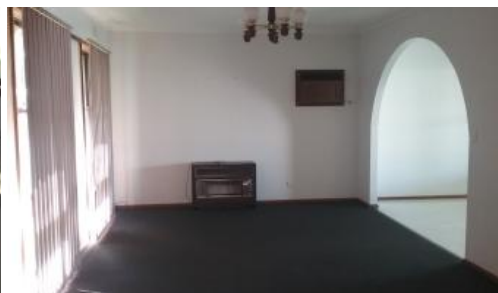


Leased



38 Daldy Crescent, Shepparton



## Great family home in central position

Brick 3 bedroom home, 2 living areas, separate kitchen/ dining, separate lounge and extra living area which opens onto outside entertainment area.

Presents extremely well. Kitchen has electric oven with gas hot plates, dishwasher and a large walk in pantry. Main bedroom has privacy with walk through robe into large ensuite. Other 2 bedrooms have built in robes with lots of storage space. Lots of storage throughout the home.

Outdoor entertainment area and double garage. Small garden shed. In a central position close to schools, bus and CBD. Well worth an inspection if you are looking for a comfortable, private home with room to move.

The above information provided has been furnished to us by the vendor/s. We have not verified whether or not that information is accurate and do not have any belief in one way or the other in its accuracy. We do not accept any responsibility to any person for its accuracy and do no more than pass it on. All interested parties should make and rely upon their own inquiries in order to determine whether or not this information is in fact accurate.

3 2 2

|               |                |
|---------------|----------------|
| Price         | \$335 per week |
| Property Type | Rental         |
| Property ID   | 962            |

### Agent Details

### Office Details

Shepparton  
187 Corio Street Shepparton VIC  
3630 Australia  
03 5831 6633

